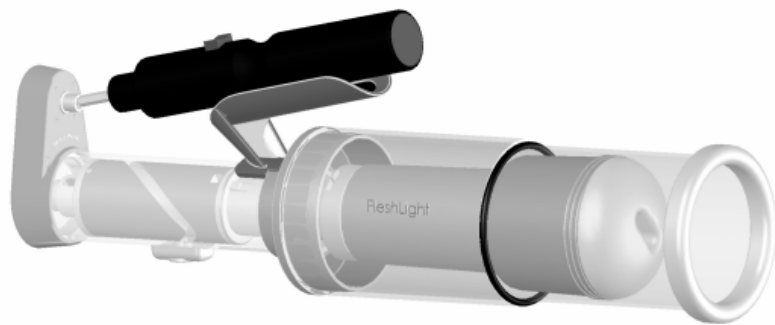


Owners Manual

*Priceless*TM



from

Toys In MotionTM
toysinmotion.com

Visit toysinmotion.com for updates, attachments and all the latest news.

Copyright 2004-2006, Toys In Motion, Inc.
Made in China

Contents

Introduction.....	1
Male and female configurations.....	2
Safety precautions.....	2
Unpacking.....	4
Assembling the base unit.....	4
Select rotation or free-spin.....	5
Setting up the male configuration.....	6
Setting up the female configuration.....	10
Employing optional parts.....	11
Additional disassembly and re-assembly.....	12
The clutch.....	13
Detecting when the clutch is slipping.....	13
Adjusting the clutch.....	13
How to contact Toys in Motion.....	14
Privacy policy.....	14
Warranty.....	15
Parts List.....	16

READ THIS FIRST

1. DO NOT USE CORN STARCH OR ANY POWDERS THAT CONTAIN CORNSTARCH ON FLESHLIGHT INSERTS OR DONGS USED WITH PRICELESS™.

Corn starch has an affinity for the clear polycarbonate protective tubes of the machine and they are practically impossible to clean if you get wet corn starch on them. It will not come off in the dishwasher!

Fleshlight has previously delivered new inserts powdered with corn starch. The inserts we provide are powdered with food-grade talc powder. There are powders around that are pure talc at your local drugstore but you will have to read the labels carefully or ask the pharmacy staff. If corn starch has been used on your insert in the past, wash it carefully, and replace the powder with talc.

The easiest cleanup is accomplished when all powders (including talc) have been rinsed from the portion of the Fleshlight insert that is exposed outside the canister. By using talc instead of corn starch, you will find the inserts will become much less sticky and less in need of powdering after each use.

2. Accompanying the machine is a guide to quick assembly. Follow the assembly procedures on the quick start guide choosing between the two configurations, one on each side. You must carry out these assembly procedures and make any necessary adjustments prior to any attempt to use the machine. Do not attempt to assemble the machine for the first time while in the heat of passion and expect that passion to persist. The machine needs to be ready for action before you are.

WARNING: THE QUICK START GUIDE IS NOT A REPLACEMENT FOR THIS OWNER'S MANUAL. YOU MUST READ THE OWNERS MANUAL TO OPERATE THE MACHINE SAFELY.

This page intentionally left blank

Introduction

Congratulations on your purchase of Priceless™. We at Toys in Motion know you will enjoy using this new product. We consider it a state-of-the-art erotic toy in terms of quality and function, and we are eager to have your comments after you use it.

In this manual we will refer to the major components shown below in Figure 1. The complete parts list is included on the back of this manual.

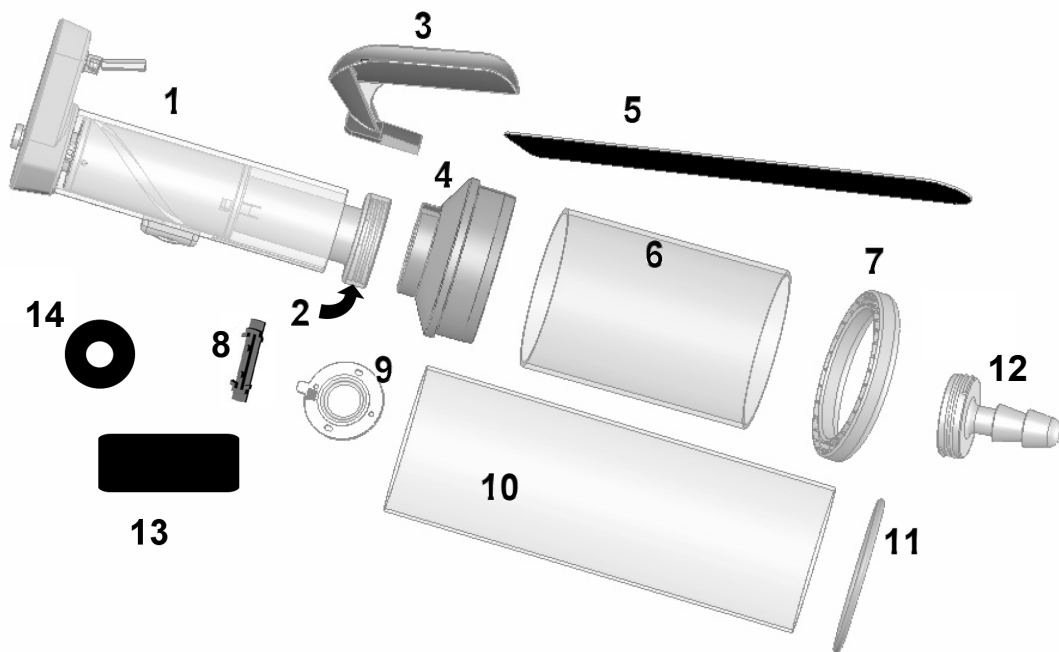


Figure 1: Major components list

The following list identifies the numbered components in Figure 1:

1. Transmission assembly
2. Extension
3. Cradle
4. Funnel
5. Velcro strap
6. Short stand-off tube
7. Comfort ring
8. Brake
9. Vent
10. Long stand-off tube
11. Adjustment O-ring
12. Female adapter
13. Velcro pad
14. Fleshlight washer

Male and female configurations

Priceless can be set up in the following ways:

- *Male configuration*—This configuration intended for male use is adapted for the Fleshlight male masturbation device.
- *Female configuration*—This configuration intended for female use allows for attachment of a flexible phallus or dong for female masturbation.

The following table shows how the parts shown in Figure 1 are used for the male and female configurations.

Parts 1-9	Required for both configurations
Parts 10-11	Male configuration
Part 12	Female configuration
Parts 13-14	Optional

Safety precautions

Throughout this manual, take special note of safety precautions marked with the word **WARNING**. Warnings are bolded and capitalized to make sure they stand out and are easy to read. Most are not as insulting as the one we provide here as an example, but it is an honest attempt to get you in the practice of recognizing and reading our warnings.

WARNING – DO NOT USE PRICELESS WHILE DRIVING.

Toys in Motion has gone to great lengths to ensure Priceless is safe when used as instructed. Safe use requires that you read and understand all of the instructions presented in this manual. Read the following list of safety precautions for your own protection.

- Read, understand, and follow the instructions contained in this manual and the product updates posted regularly on our Web site: <http://www.toysinmotion.com>.
- Re-read the precautions after assembling and before using Priceless for the first time.
- Do not use Priceless with broken or damaged components. All parts should be smooth, free of burs and abrasions, and without sharp edges. Verify this immediately upon receiving your package and before each use.
- Use only battery-powered devices with Priceless. Do not use corded screwdrivers or drills where danger of electrical shock can exist.
- Do not use Priceless with any power source capable of exceeding 550 RPM. A clutch in the gearbox will release and prevent excess power from reaching the other operating components, but you can damage that drive mechanism if you routinely overpower the machine. The machine was designed for use with cordless electric screwdrivers that operate between 180 and 400 RPM.

WARNING – DO NOT ATTACH PRICELESS TO YOUR DRILL PRESS, LATHE, WEED-WACKER, LAWN MOWER OR ANY OTHER POWERFUL EQUIPMENT SUCH AS THE POWER-TAKEOFF ON YOUR TRACTOR.

WARNING – DO NOT TOUCH OR ALLOW ANYTHING TO INTERFERE WITH OR GET CAUGHT IN THE DRIVE MECHANISM OR OTHER MOVING COMPONENTS OF THE POWER SOURCE.

- If your power source has a torque limiting adjustment, you should adjust it such that it releases at about 10 or 12 inch/pounds.

-
- Do not activate Priceless until it is fully and properly assembled according to the instructions in this manual. Specifically, do not operate or attempt to use this product without one or both of the protective stand-off tubes properly in place.
 - Use is restricted to hand-held operation. Do not attempt to fix Priceless rigidly to any other object. Do not place this product between a mattress and box-spring or use in any manner that would prevent it from being quickly withdrawn from close bodily contact.
 - When using Priceless with the Fleshlight, assure that the edges of the Fleshlight's plastic case are smooth, free of burs or rough spots, and that no sharp edges are present. Use only the Fleshlight male masturbation device from Interactive Life Forms (www.fleshlight.com). Priceless was designed for use with the Fleshlight and has not been tested with any other male masturbation device.
 - When used with a dong or phallus in the female configuration, use only soft, flexible devices. Do not attempt to affix any rigid phallic device to the machine.
 - Do not share sexual devices that come in intimate bodily contact with other users. To do so puts you at risk of being exposed to a sexually transmitted disease. In theory this precaution would not apply to Priceless itself, but only to the devices attached to it. Nevertheless, we caution you not to share use of Priceless with anyone with whom you would not feel comfortable having un-protected sex.
 - Maintain good personal hygiene. Make sure Priceless is clean and dry before you store it. In most instances, removing the extension from the shuttle and washing it, the vent, the stand-off tubes, and the comfort ring in warm water will be adequate. In some cases, you may wish to clean the entire product. Remove the power source you are using and feel free to place the entire product in the dishwasher. Be certain to turn off heated drying if you do use the dishwasher.
 - Use the lubricant recommended by the manufacturer of the device you are using with Priceless on both that device and your genitals. Adequate amounts of lubricant will likely be in excess of that required when operating the same device by hand. You may also need to add lubricant during the course of a session. It is vitally important that proper lubrication be maintained throughout the session.
 - Do not use this product while you are driving or operating heavy equipment.

Unpacking

Open the box and confirm that all the components illustrated in Figure 1 are present. Also inspect all components for any sharp edges or burs. All edges should be smooth and unable to cut you or catch on any clothing. If any pieces are missing, broken or sharp, contact Toys In Motion for instructions on how to receive a replacement.

WARNING – DO NOT USE PRICELESS WITH ANY BROKEN, SHARP, OR MISSING COMPONENTS. INSPECT ALL PARTS CAREFULLY BEFORE USING THIS PRODUCT.

Assembling the base unit

1. Remove components from the box and identify them using the table in Figure 1 above.
2. **WARNING: BE CERTAIN THE CAPTURE SCREW AND MAIN BEARING ARE TIGHT.**

The **main bearing** must be seated in the groove in the **shuttle** and then both it and the **capture screw** must be tightened so they can not vibrate loose during operation.

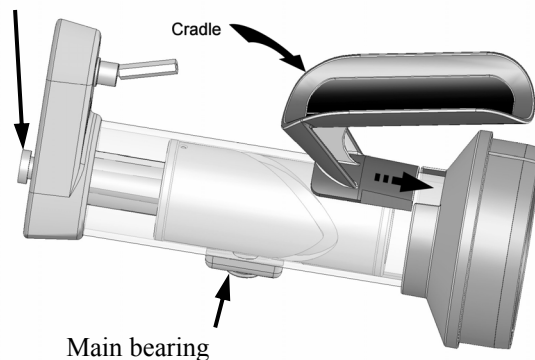
3. Find the **funnel** and slide it onto the **transmission**.

It will only go on one way. There is a groove in the **transmission tube** that must be aligned with the **key** (bump) in the **funnel**. Slide the **funnel** onto the **transmission** just far enough so that the transmission tube is flush with the underside of the neck of the **funnel**.

4. Find the **cradle** and lay it on the **transmission tube** as illustrated.

Align the base of the **cradle** with the gap in the **funnel** of the same size. Slide the **cradle** into the notch in the **funnel** until both are snug on the transmission without letting the **funnel** slide off the **transmission tube**.

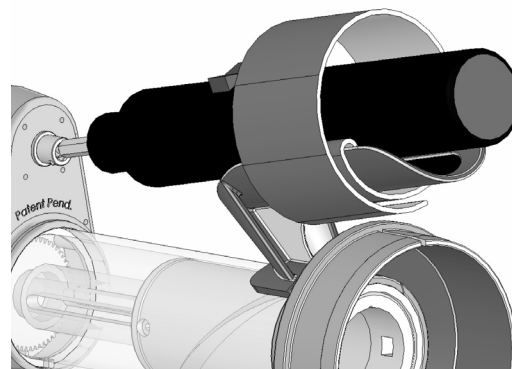
Capture screw



5. Locate the **Velcro strap** and adhere about one inch of the hook (rough) side to the loop (smooth) pad permanently affixed in the valley of the **cradle**.

Fold the tail back underneath the **cradle** as seen to the right. In the illustration, the light side of the strap indicates the hook side and the darker side the loops.

By following the path indicated for the strap, the hook side will be completely enclosed and unable to catch on clothing or in hair. Do not complete the loop until the power source is in place.



-
- Lay the cordless screwdriver or drill on its back (buttons or handle facing up away from the machine) in the valley of the **cradle** and slide it forward until it engages fully the $\frac{1}{4}$ hex inch drive on the underside of the **gearbox**.

If there is a chuck, tighten it on the hex drive. Pass the strap over the top of the power source and pull it tight as you engage the strap onto itself. Continue wrapping until any excess strap is affixed onto itself.

Depending on which power screwdriver or drill you are using, some adjustment in the placement of the strap may be required. Experiment moving the strap forward or backwards on the cradle to find the best place that leaves the control button(s) exposed and easily accessed while providing stable attachment to the **cradle**. Remember also, there is some adjustment possible by moving the **funnel** and **cradle** together up along the **transmission** towards the **gearbox**. To make this adjustment you might have to partially slide the **cradle** out of the **funnel** as it is this wedge fit that keeps these pieces tight on the **transmission**. This could take a little time and may feel awkward. But assuming you will be using the same power device each time you use the machine, once these adjustments are made the assembly will always be the same and will come to feel quite natural.

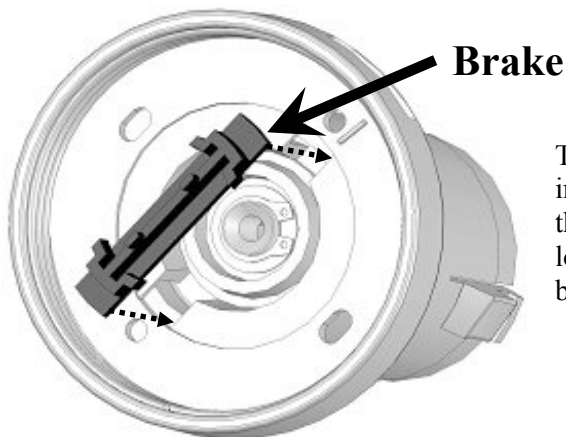
- Activate the screwdriver briefly to ensure the shuttle both revolves and strokes properly.

Notwithstanding our warnings in this manual and on the machine not to engage the power without the protective tubes in place, it is safe to do so here while a) the extension is removed and not connected to the shuttle and b) no attempt to actually use the machine is in progress. Briefly activate the power source until the shuttle is near its full extension at the bottom of the transmission and leave it in this position. You will have to insert the **extension** into the **shuttle** which is easier when the **shuttle** is near the end of the tube.

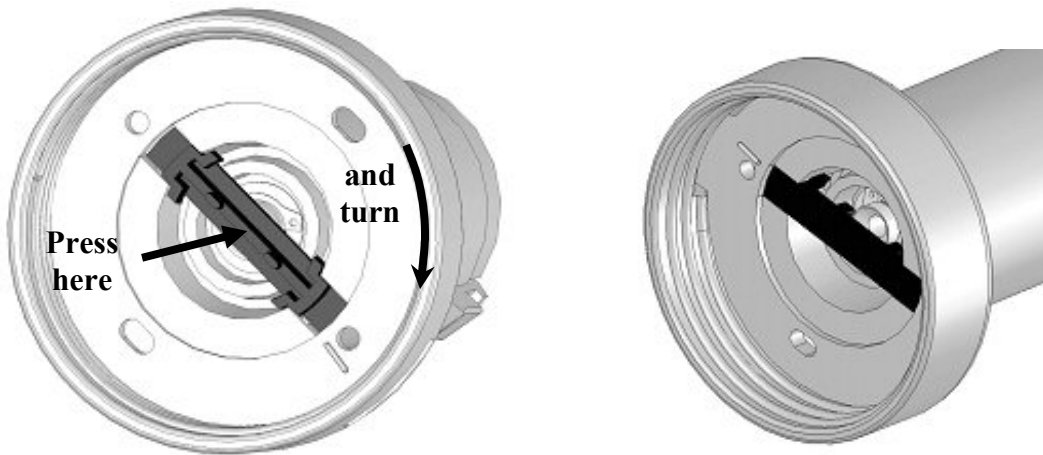
Select rotation or free-spin

The free-spin assembly permits the machine to be operated with or without the rotational component of its natural motion. The free-spin assembly is built into the **extension**. The spin (rotation) is enabled or disabled depending upon how the **brake** is installed beneath the **vent** inside the **extension** as illustrated below.

- Locate the **extension** and the **vent**. If the **female adapter** is screwed into the **extension**, unscrew it by holding onto the **extension** with the left hand and rotating the **female adapter** counter-clockwise. If you can't find the **vent**, it is probably already in its proper place in the **extension** underneath the **female adapter**.



The **brake** is the small black piece indicated. It can be inserted into slots in the **cap** (following the dashed lines) in the locked or unlocked direction as indicated below.

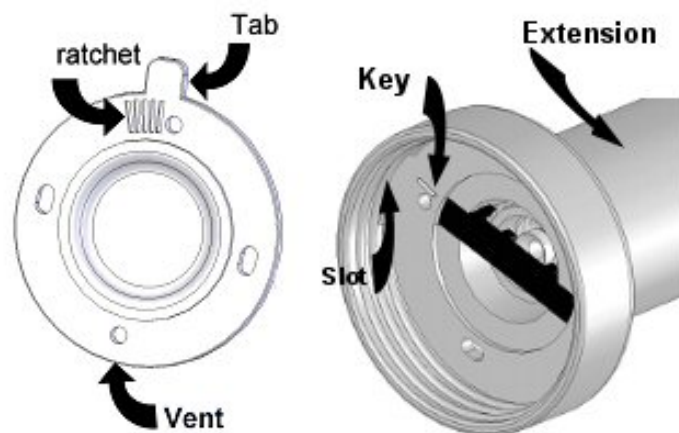


2a. **Locked Position** - Place the **brake** in the cap as indicated above. While pressing gently down on it, rotate the cap and brake together until the **brake** slips down into the slots below and locks the **cap** and **extension** together.

2b. **Free-spin Position** - Place the brake in the cap as indicated above (smooth side up) and press into place. The cap and the extension will spin freely when the brake is installed in this fashion.

Setting up the male configuration

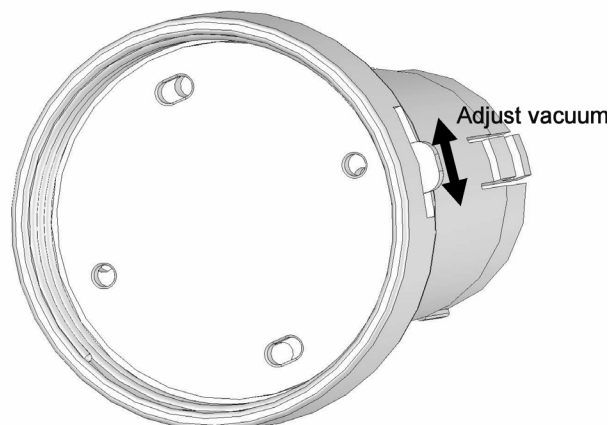
1. Assemble the base unit.
See the section entitled "Assembling the base unit" above.
2. Configure for rotation or free-spin
See the section entitled "Select rotation or free-spin" above



-
- The **vent** is used to adjust the vacuum inside the Fleshlight while in use. Position the **vent** smooth side up (ratchet side down) over the **brake** and insert it on an angle such that the tab on the **vent** slides out through the slot on the side of the extension.

Press down lightly and move the **vent** around until it falls down and sits flush inside the **extension**. While holding the **vent** down lightly, you should be able to slide the tab back and forth in the slot on the side of the **extension**. While doing so, notice holes in the **vent** move in relation to the holes in the **extension**. When fully misaligned the vacuum in the Fleshlight will be maximized. When the holes are perfectly aligned, there will be minimum vacuum.

As you make the adjustment you will feel the key in the **extension** engage the ratchet slots on the underside of the **vent**. This is so that when you screw the Fleshlight into the **extension**, the **vent** will maintain its position along with the vacuum that you set. You will have to experiment with the vacuum to find the position you prefer. Initially, we suggest you set the vent so that the holes are perfectly aligned and the vacuum is minimal.



- Remove the Fleshlight insert from its housing/canister, and screw it into the **extension** firmly.

It will bottom out against the smooth face of the **vent** in the **extension** where vacuum is maintained. There is another reason to tighten the Fleshlight snugly. The machine will operate rotating in either direction. In the clockwise direction, the Fleshlight will simply unscrew itself when the machine is in operation if it was not first installed tightly enough.

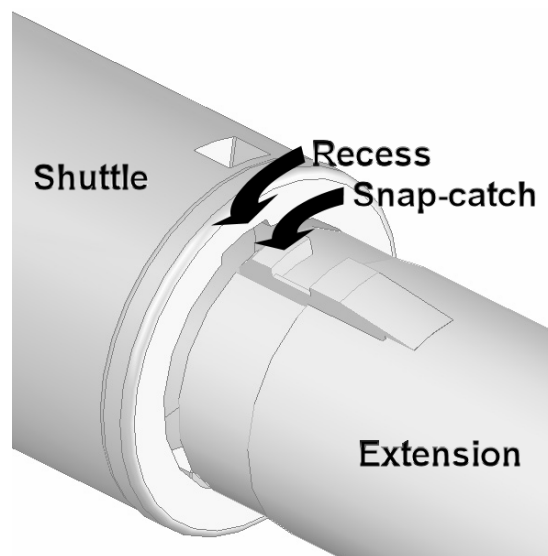
WARNING – IT IS IMPORTANT THE FLESHLIGHT BE TIGHTLY SCREWED INTO THE EXTENSION SO THAT IT WILL NOT COME LOOSE WHEN THE MACHINE IS OPERATED IN A CLOCKWISE DIRECTION.

- Insert the extension into the base of the **shuttle**.

The **shuttle** should be at the bottom of transmission (as shown in the figure for step 4 in the “Assembling the base unit”) with the screwdriver or drill firmly attached to both the **hex drive** and the cradle by means of the strap.

The extension should be aligned such that the snap-catches on the **extension** align with the recess cut-away in the **shuttle**. Make this alignment and push the **extension** into the shuttle as far as possible and then rotate the **extension** clockwise. The snap-catches will click into place.

If you do not have the screwdriver or drill



attached as instructed, the shuttle will tend to turn and retract as you try and push the extension into the shuttle making the insertion more difficult.

When engaged properly, you should not be able to remove the **extension** without depressing the snap-catches and reversing the process unless using exceptional force.

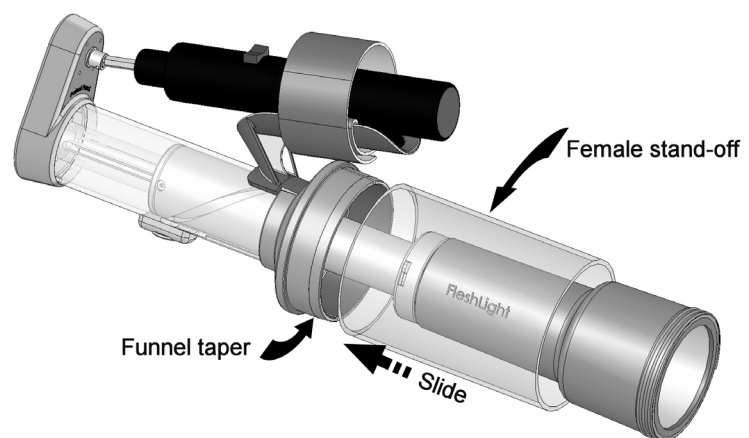
WARNING – IT IS IMPORTANT THAT BOTH SNAP-CATCHES BE FULLY ENGAGED AND THAT THE EXTENSION CANNOT BE REMOVED

Removal requires that you depress the snap-catches, rotate the **extension** counter-clockwise, and pull. Some women with very small hands will have difficulty pressing the snap-catches in far enough to allow the extension to be rotated back to its proper withdrawal position. We apologize for this difficulty but to make the attachment strong enough to handle the inertia of a two pound Fleshlight moving 5 miles per hour necessitated this design.

6. Install the **short stand-off** tube by sliding it over the Fleshlight and onto the tapered edge of the funnel.

It should be snug, but it should slide all the way up to the lip on the funnel.

7. Assemble the Fleshlight itself by installing the Fleshlight insert you intend to use.

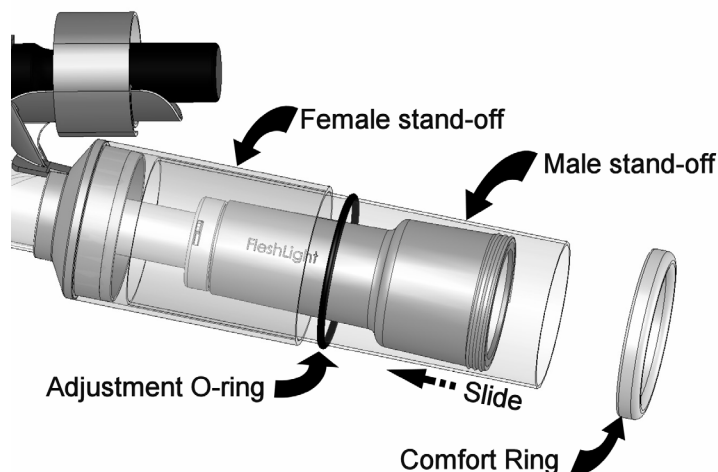


WARNING – USE ONLY INSERTS INTENDED FOR USE WITH THE FLESHLIGHT AND MANUFACTURED BY INTERACTIVE LIFE FORMS (www.fleshlight.com).

WARNING – CHECK ONE LAST TIME THAT THERE ARE NO BURS, SHARP EDGES, OR ANYTHING THAT MIGHT CUT OR IRRITATE YOUR SKIN, KEEPING IN MIND THE FLESHLIGHT CASE WILL BE BOTH ROTATING AND STROKING. CHECK THE ENTIRE CIRCUMFERENCE, AND SAND, CUT, OR SCRAPE AWAY ANY SHARP OR ROUGH EDGES.

-
8. Install the **long stand-off tube** by sliding it over the Fleshlight and inside the **short stand-off tube**.

It should slide smoothly all the way in until it bottoms against the lip of the **funnel**. It is important this tube slide freely inside the **short stand-off tube**. If the entire assembly is held vertically, the long stand-off should fall out freely. The free motion of this tube is what ensures that you cannot get pinched between the moving rigid wall of the Fleshlight case and the machine.



WARNING – THE LONG STAND-OFF TUBE MUST SLIDE FREELY INTO AND OUT OF THE SHORT STAND-OFF TUBE. DO NOT USE THE MACHINE IF THIS IS NOT THE CASE. CONTACT TOYS IN MOTION FOR SERVICE.

WARNING – DO NOT USE THE MACHINE WITH A FLESHLIGHT WITHOUT THE LONG STAND-OFF TUBE IN ITS PROPER PLACE AND MOVING FREELY AS INSTRUCTED.

9. Install the **adjustment O-ring** by stretching it over and sliding it down the **long stand-off tube**.

Slide or roll it down until it touches the edge of the **short stand-off tube**. Ensure once again the **long stand-off** will slide freely out of the **short stand-off**.

10. Install the **comfort ring** by pressing it firmly onto the end of the **long stand-off tube**.

Check once again that the **comfort ring** has no sharp edges, burs or abrasions that could irritate the skin.

11. Activate the power screwdriver or drill and allow several revolutions to be sure the entire drive mechanism moves freely and quietly through the entire range of motion.

WARNING – REMEMBER TO LUBRICATE THE FLESHLIGHT INSERT AND YOURSELF PRIOR TO USE.

12. Adjust the depth of stroke. Depending on your preferences and exactly where you positioned the **funnel** on the **transmission tube** to effect the attachment of the drill or screwdriver, the Fleshlight might, on full extension, actually extend out of the **stand-off tube** or push against the **comfort ring**. Slide the long **stand-off tube** out slightly and roll or slide the **adjustment O-ring** up towards the **funnel**. This extends the overall length alleviating the problem. Certain Fleshlight inserts may not work with Priceless. Check the Web site www.toysinmotion.com.

Setting up the female configuration

1. Assemble the base unit.

See the section entitled “Assembling the base unit.”

2. Install the **female adapter** by screwing it into the **extension**.

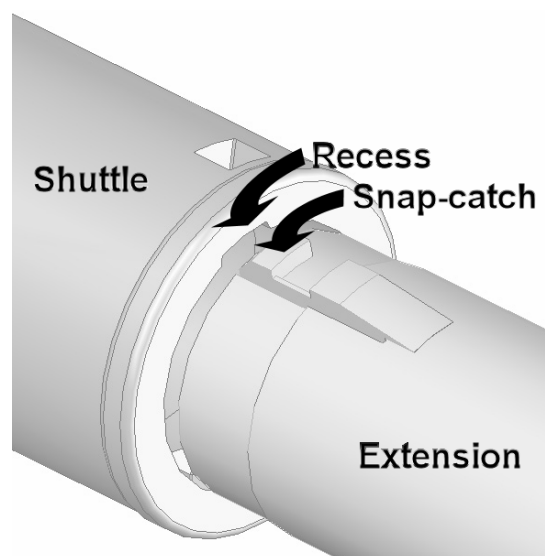
You must tighten this connection firmly because Priceless is able to operate rotating in either direction. If this connection is too loose, the **female adapter** will simply unscrew itself from the **extension** when the machine is operated in the clockwise direction.

Although the **vent** is not important in this configuration, you may wish to install it beneath the **female adapter** where it belongs (see assembly step 3 in “Setting up the male configuration”) to keep it from getting lost.

13. Insert the extension into the base of the **shuttle**.

The **shuttle** should be at the bottom of transmission (as shown in the figure for step 4 in the “Assembling the base unit”) with the screwdriver or drill firmly attached to both the **hex drive** and the cradle by means of the strap.

The extension should be aligned such that the snap-catches on the **extension** align with the recess cut-away in the **shuttle**. Make this alignment and push the **extension** into the shuttle as far as possible and then rotate the **extension** clockwise. The snap-catches will click into place.



If you do not have the screwdriver or drill attached as instructed, the shuttle will tend to turn and retract as you try and push the extension into the shuttle making the insertion more difficult.

When engaged properly, you should not be able to remove the **extension** without depressing the snap-catches and reversing the process unless using exceptional force.

WARNING – IT IS IMPORTANT THAT BOTH SNAP-CATCHES BE FULLY ENGAGED AND THAT THE EXTENSION CANNOT BE REMOVED

Removal requires that you depress the snap-catches, rotate the **extension** counter-clockwise, and pull. Some women with very small hands will have difficulty pressing the snap-catches in far enough to allow the extension to be rotated back to its proper withdrawal position. We apologize for this difficulty but to make the attachment strong enough for its alternate configuration necessitated this design. While sometimes difficult on the first attempt, we have verified that most women can in fact effect the release with a little practice.

-
3. Install the dong you plan to use by pushing it firmly over the ridges on the female adapter.

WARNING – USE ONLY SOFT PLIABLE DONGS OR PHALLIC DEVICES DESIGNED TO BE AFFIXED TO HARNESES AND OTHER DEVICES FROM REPUTABLE MANUFACTURERS SUCH AS THOSE OFFERED BY DOC JOHNSON. DO NOT ATTEMPT TO ATTACH OR ACTUATE ANY RIGID DILDO, VIBRATOR, OR PHALLIC DEVICE.

4. Install the short stand-off tube by sliding it over the extension and onto the tapered edge of the funnel.

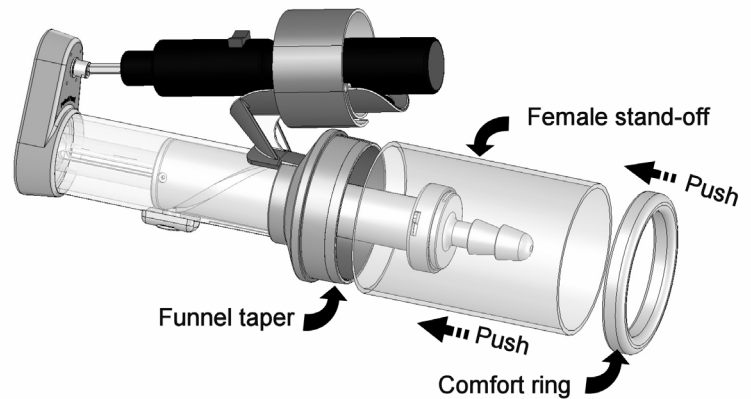
It should be snug but will slide all the way up to the lip on the funnel.

5. Install the comfort ring by pressing it firmly onto the end of the short stand-off tube.

Check once again that the comfort ring has no sharp edges, burs or abrasions that could irritate the skin.

6. Activate the power screwdriver or drill and allow several revolutions to be sure the entire drive mechanism moves freely and quietly through the entire range of motion.

WARNING – REMEMBER TO LUBRICATE THE DONG AND YOURSELF PRIOR TO USE.



Employing optional parts

Two components we have not discussed are designed to address a few problems you might have.

Item 14 in Figure 1 is the **Fleshlight washer**. The Fleshlight inserts extend the full length of their housing/canister and can under certain circumstances cover the holes in the vent disabling the vacuum adjustment mechanism. If you experience this difficulty, place the Fleshlight washer inside the canister prior to installing the insert (step 7 in “Setting up the male configuration”).

WARNING – BE CERTAIN THIS PART IS SMOOTH A FREE OF SHARP EDGES OR BURS THAT MIGHT IRRITATE THE SKIN.

Item 13 in Figure 1 is an adhesive backed **Velcro pad** exactly like the one already affixed to the **cradle**. The design of the **cradle** is a compromise allowing many different screwdrivers and drills to be used with Priceless.

In the event you are using a cordless electric screwdriver with a small round profile, you might find it difficult to tighten the strap around the device tightly enough to prevent it from twisting in place on the cradle when the machine is in use.

Remove the screwdriver taking note of where the strap passes around the handle/grip. Peel of the backing and wrap the Velcro pad around the screwdriver affixing the adhesive side to the screwdriver in the noted position. If you then re-wrap the strap following the proper path illustrated with step 5 of “Assembling the base unit”, the scrap will additionally engage this new Velcro fastener preventing the screwdriver from twisting when the machine is operated.

Additional disassembly and re-assembly

The **shuttle** assembly is easily removed from the transmission to facilitate hand or dishwasher cleaning, and to provide for future upgrades including **shuttles** with different linear motion profiles.

The shuttle is held in place by two thumbscrews. One passes through the top of the gearbox (called the **capture screw**) and the other screws in through the side of the transmission, the **main bearing** assembly (see figure on page 4).

To remove the shuttle assembly:

1. Remove the **funnel** and the **extension** from the transmission as instructed elsewhere.
2. Remove the **capture screw** from atop the gearbox completely.
3. Unscrew the **main bearing assembly** on the side of the **transmission** until the shuttle falls to the bottom of the **transmission** and can be turned freely with your finger without any reciprocating action. You do not have to remove the **main bearing assembly** completely although this will cause no harm other than the added danger of losing a part under the sofa.
4. You should now be able to shake the unit gently and the **shuttle** assembly will fall out.

WARNING – DON'T LET THE SHUTTLE ASSEMBLY FALL ON YOUR TOES OR FEET.

To re-install the shuttle:

1. Be certain the **main bearing assembly** on the side of the **transmission** is backed out (counter-clockwise) far enough such that it will not engage the shuttle as it is inserted. Look inside the end of the **transmission** tube where the bearing naturally engages in the **shuttles** groove and verify that the bearing is completely hidden from view as you look down along the tube's wall.
2. Insert the **shuttle** assembly gear-first into the transmission.
3. Tip the unit up such that the **gearbox** faces the floor.
4. Rattle gently and twist the **hex-drive** with your fingers until the **shuttle** assembly falls into place and begins to turn as you turn the **hex-drive**.
5. Re-install the **capture screw** that passes through the top of the gearbox and tighten snugly with your fingers.
6. Turn the **transmission** back upright such that the gearbox faces the ceiling. The shuttle should have fallen to the bottom of the tube. A gentle shake could be required.
7. Re-engage the **main bearing** in the shuttle groove. Screw the main bearing assembly in gently until you feel the assembly start to press up against the side of the shuttle. Don't over tighten or you will not be able to subsequently move the shuttle. Insert two fingers into the end of the **shuttle** and turn it until you feel it engage the shuttle's groove. You can see the groove through the clear **transmission** tube, so use your vision as well as your sense of touch.
8. After you feel/see the **main bearing** slip into the **shuttle's** groove, finish inserting the bearing assembly by screwing it down (clockwise) snugly against its base on the side of the **transmission**.

The clutch

The **clutch** is intended to protect you from injury and the machine from damage when power is applied and too much resistance is encountered. The **clutch** is adjusted at the factory for satisfactory operation for most users. Over time and with use it is possible some adjustment may be needed.

Detecting when the clutch is slipping

When you have power applied to the machine (the hex-drive is being turned by a drill or screwdriver) but the shuttle and its attached devices (Fleshlight or dong) are not rotating or stroking, **then the clutch is most likely slipping**. It is intended to do this and most often results when too little lubrication is used.

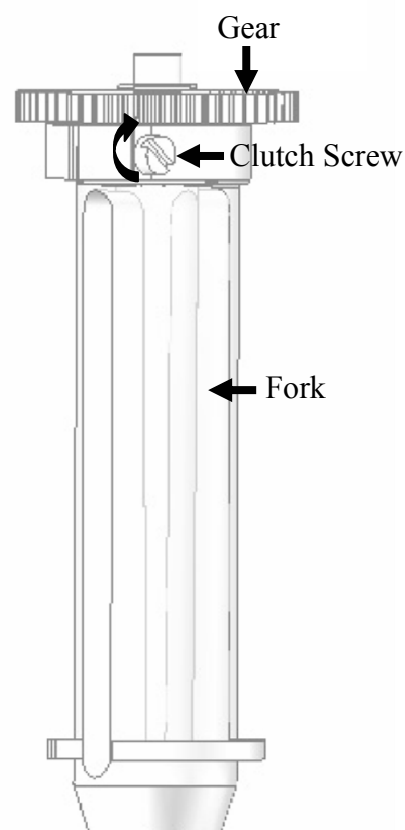
WARNING - WHEN THE CLUTCH SLIPS, IT MAKES A DISTINCTIVE CHIRPING OR SQUEAKING NOISE. STOP THE MACHINE WHEN YOU HEAR THIS AND ADD LUBRICANT. IN MANY CASES THIS WILL SOLVE THE PROBLEM.

If adding lubrication did not solve the problem, you may need to tighten the clutch.

Adjusting the clutch

1. To remove the **shuttle** assembly, follow the disassembly procedures on page 12.
2. Locate the slotted screw at the top of the **fork** beneath the **gear**.
3. Using an ordinary flat blade screwdriver, tighten (turn clockwise) this screw $1/8^{\text{th}}$ of a turn.
4. Reassemble the machine and try again.
5. Repeat steps 1-4 as necessary until the machine operates normally.

WARNING – DO NOT OVER-TIGHTEN THE CLUTCH. REMEMBER, IT IS THERE TO PROTECT YOU. TIGHTEN THE CLUTCH IN VERY SMALL STEPS JUST UNTIL NORMAL OPERATION IS RESTORED.



How to contact Toys in Motion

Up to the minute details and contact information are always available at www.toysinmotion.com.

We are unable to answer every call and e-mail. If you don't hear from us, it is probably because your question is already answered on our Web site in the FAQ section (Frequently Asked Questions). Please review the material there.

Email:

Questions info@toysinmotion.com
Problems problems@toysinmotion.com
Your Order orders@toysinmotion.com

Please tell us what you think

Feedback feedback@toysinmotion.com

Voice or fax:

1-87 SEXTOY 4U
1-877-398-6948
(954) 727-3020 International

Snail mail: Business Mail Only

DO NOT RETURN ANY PRODUCTS TO THIS ADDRESS
CALL FOR RETURN INSTRUCTIONS

Toys In Motion, Inc.
1350 E. flamingo Rd. Ste 13B-58
Las Vegas, NV 89119

Privacy policy

We do not sell or otherwise share your personal information with anyone. In addition, apart from confirmation of your order, you will never hear from us again. We will not email you or contact you unless you specifically ask to be added to our mailing list. We are confident you will enjoy Priceless so much, you will check back with us often on your own. Go to www.toysinmotion.com.

Warranty

Toys In Motion warrants Priceless to be free from defects in material and assembly. This manual describes the safe and proper method for assembly and use. You should follow the inspection and assembly instructions carefully. In the unlikely event you discover any damaged, missing, or sharp parts, **do not use the machine**. Return the faulty part(s) or the entire machine unused with a description of the problem, and we will replace or repair it.

WARNING – DO NOT USE PRICELESS WITH ANY BROKEN, SHARP, OR MISSING COMPONENTS. INSPECT PARTS CAREFULLY BEFORE USE. CALL TOYS IN MOTION FOR RETURN INSTRUCTIONS.

Priceless has been carefully designed to provide you a lifetime of pleasure with normal use as described in this manual. In the event a part fails or wears out, return it to us and we will replace it free of charge for one year.

USE AT YOUR OWN RISK.

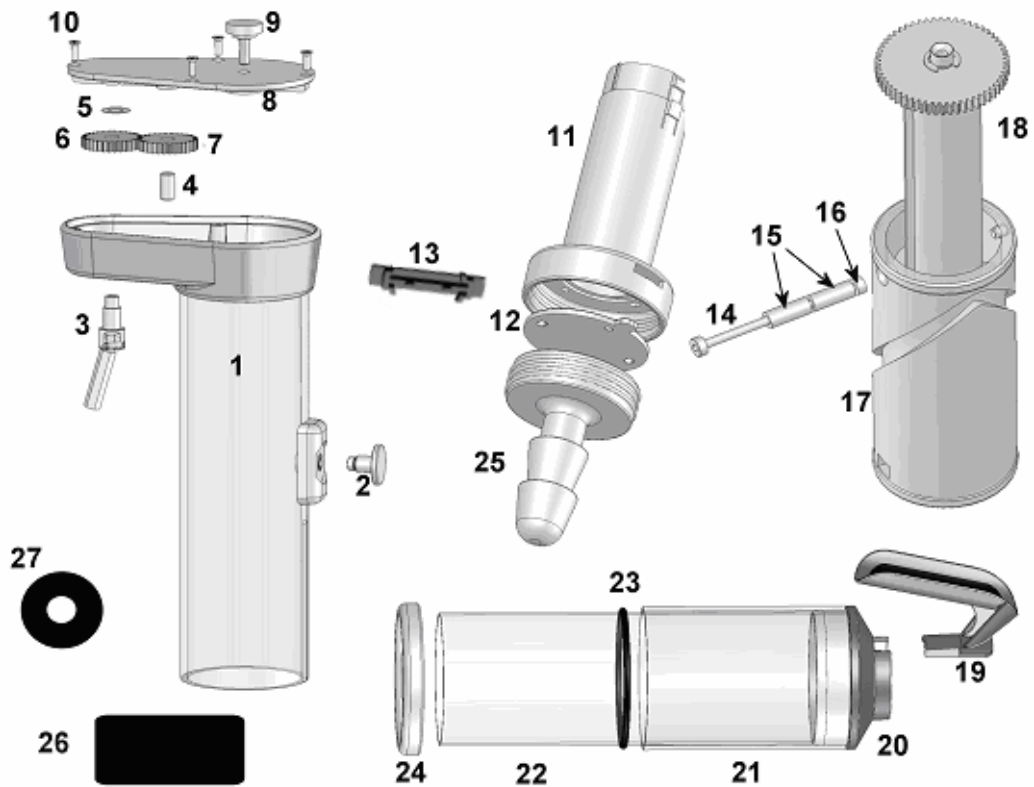
You assume full responsibility for your own safety. While every effort has been made to provide you with a safe product and good advice on its safe use, ultimately your safety is your own responsibility.

WARNING – TOYS IN MOTION DENIES RESPONSIBILITY FOR ANY INJURY CAUSED BY, OR IN ASSOCIATION WITH, THE USE OF THIS PRODUCT.

FOLLOW THE INSTRUCTIONS PRESENTED IN THIS DOCUMENT CAREFULLY, OBSERVING ALL THE WARNINGS. IF YOU ARE UNCERTAIN REGARDING THE SAFE USE OF THE MACHINE, DO NOT USE IT.

Check online at www.toysinmotion.com for updated instructions and advisories. Check the safety section on our FAQ page. Send e-mail to problems@toysinmotion.com with the subject line “Safety” with any questions or worries **BEFORE** using Priceless if you have **ANY** concerns.

Parts List



Item	Part #	Description (Qty)	Item	Part #	Description (Qty)
1	001-700	Transmission tube assembly	14	001-406	Drive pin
2	001-702	Main bearing assembly	15	001-108	Fork bearings (2)
3	002-701	Hex-Drive Assembly	16	001-109	Bearing retainer
4	001-400	Idler shaft	17	001-503	Shuttle
5	001-103	E-ring retainer	18	002-705	Fork assembly
6	002-514	Gear square drive	19	001-709	Cradle
7	001-514	Gear 32032	20	001-508	Funnel
8	001-505	Cover	21	001-510	Short stand-off tube
9	001-708	Capture screw assembly	22	001-511	Long stand-off tube
10	001-104	Cover screws (4)	23	001-113	Adjustment O-ring
11	002-506	Extension	24	001-512	Comfort ring
12	001-507	Vent	25	001-513	Female adapter
13	002-519	Brake	26	001-112	Velcro pad
			27	001-515	Fleshlight washer